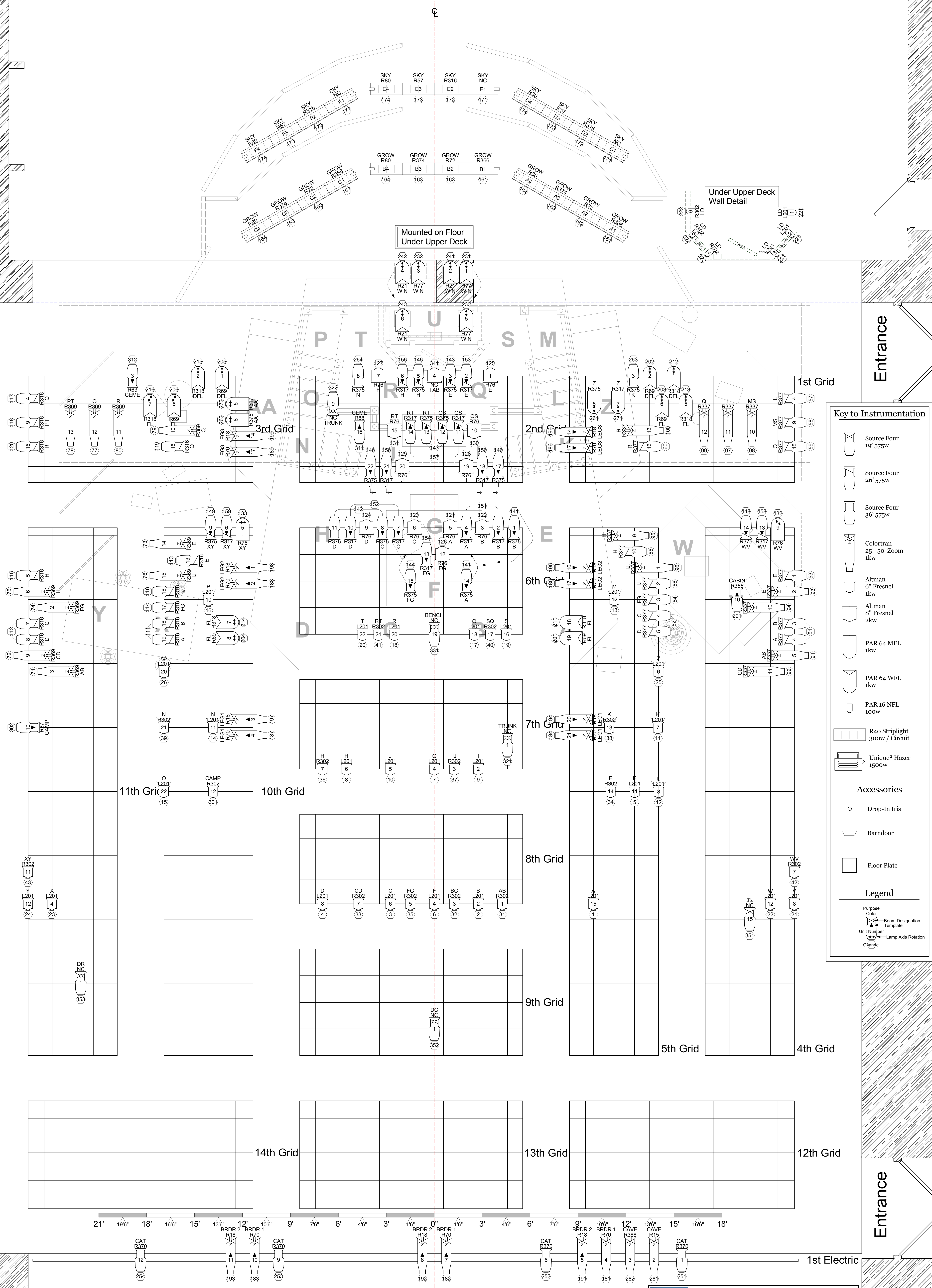


Pipe Under Overhang



Key to Instrumentation

- Source Four 19' 575w
- Source Four 26' 575w
- Source Four 36' 575w
- Colortran 25'-50' Zoom 1kw
- Altman 6' Fresnel 1kw
- Altman 8' Fresnel 2kw
- PAR 64 MFL 1kw
- PAR 64 WFL 1kw
- PAR 16 NFL 100w
- R40 Striplight 300w / Circuit
- Unique Hazer 1500w

Accessories

- Drop-In Iris
- Barndoor
- Floor Plate

Legend

- Beam Designation
- Template
- Lamp Axis Rotation
- Changel

NOTES

UNITS ON 1ST ELECTRIC SHOULD BE ABLE TO FOCUS TO THE GRID.

PLEASE HAVE R132 ON HAND AT FOCUS.

PLEASE HAVE BARNDOORS & TOPHATS ON HAND AT FOCUS.

CONTACT DESIGNER WITH ANY QUESTIONS. 615.491.1007 (C)

BIG RIVER

TENNESSEE REPERTORY THEATRE

TENNESSEE PERFORMING ARTS CENTER

DESIGN: MICHAEL BARNETT

SCENIC DESIGN: GARY HOFF | TECH DIR.: ANDREW BEVACQUA

FULL STAGE LIGHTING PLOT

SCALE 1/2" = 1'0" | REVISION 1 | MARCH 10, 2009