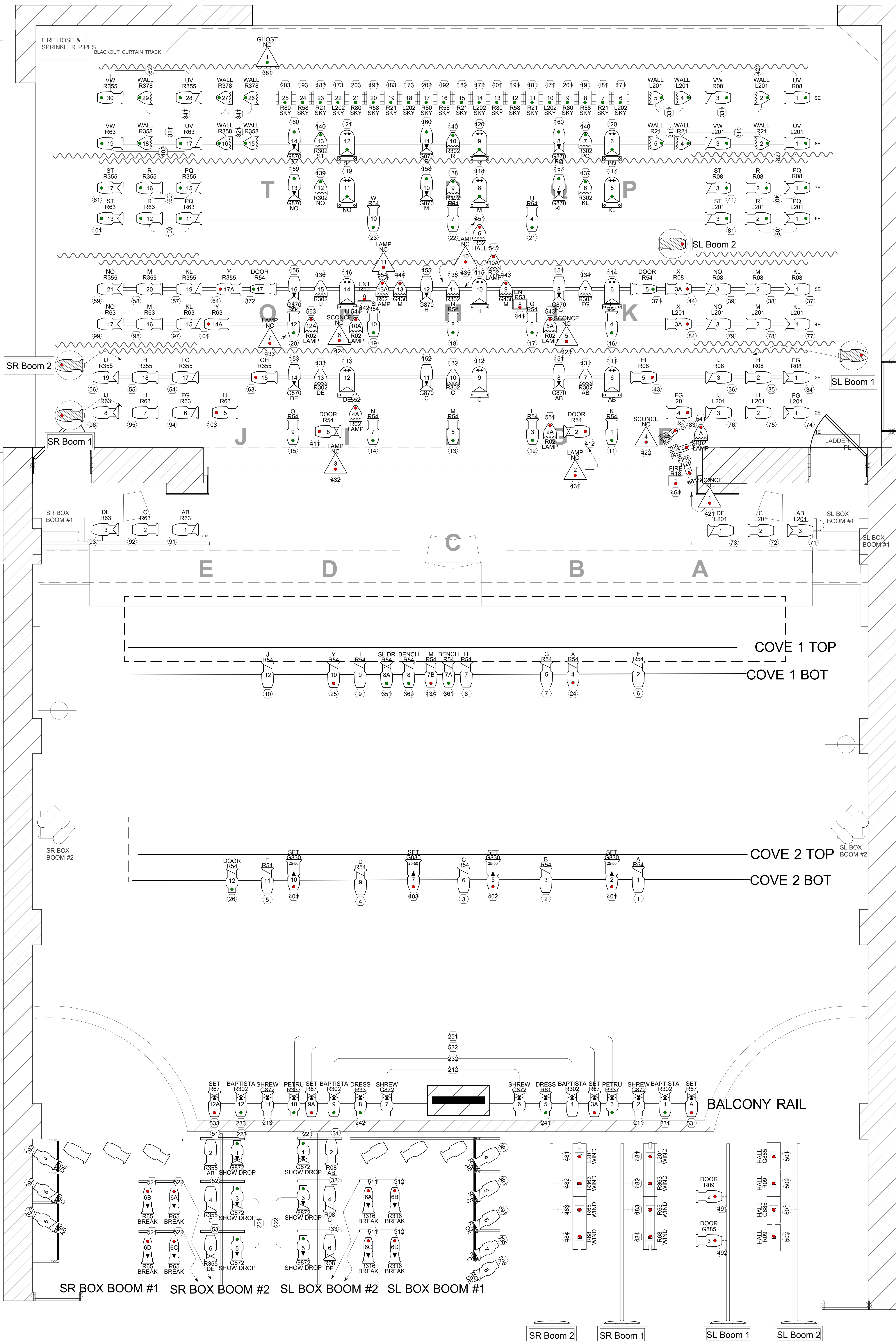


TRIM	GOODS	DIST	#
18'-3"	Border	21'-7"	18
19'-4"	9th Electric	19'-10"	17
19'-4"	Cyc	18'-0"	16
17'-9"	8th Electric	17'-3"	15
19'-4"	Border	16'-0"	14
17'-9"	7th Electric	14'-9"	13
19'-4"	Open	14'-0"	12
17'-6"	6th Electric	13'-0"	11
19'-4"	Petruchio	12'-3"	10
19'-4"	Border	10'-6"	9
17'-9"	5th Electric	9'-0"	8
17'-6"	Open	8'-0"	7
17'-9"	4th Electric	7'-0"	6
19'-4"	Border	5'-6"	5
19'-6"	3rd Electric	4'-0"	4
17'-6"	Show Drop	3'-0"	3
19'-0"	2nd Electric	2'-0"	2
18'-3"	1st Electric	1'-0"	1



Key to Instrumentation

- Source Four 19' 575w
- Source Four 26' 575w
- Source Four 36' 575w
- Source Four 50' 575w
- Source Four 25' - 50' Zoom 575w
- Source Four 36' Junior 575w
- Altman 360Q 6x16 575w
- Altman 360Q 6x12 575w
- Altman 360Q 6x9 575w
- Source Four PARNel 575w
- PAR 16 NFL 100w
- Times Square Micro-Fill 250w
- Practical Various Wattages
- Altman Econocye 300w
- Altman R40 Strip 900w / Circuit
- Unit Used Only in Kiss Me Kate
- Unit Used Only in Dial "M" for Murder

Accessories

- DMX Auto Iris
- Wybron Forerunner
- Rosco I-Cue
- Meteor Ellipsan
- Floor Plate

Legend

Purpose Color

Beam Designation Template

Unit Number

Lamp Axis Rotation

Chandel

Followspot Colors R192 / R06 / R33 / R51 / R61 / L238

NOTES

PLEASE HAVE R 132 ON HAND AT FOCUS. PLEASE CONTACT DESIGNER WITH ANY QUESTIONS. 615.491.1007 (C)

FINAL FLOOR MOUNT PLACEMENT BY DESIGNER ON SITE.

NON-DIMMABLE, BATTERY OPERATED PRACTICALS TO BE USED ON DRESSING TABLES IN KISS ME KATE. PLEASE SEE PROPS FOR MORE INFO.

BARTER THEATRE

DESIGN: MICHAEL BARNETT

SCENIC DESIGN: COURT WATSON | DIRECTOR: JOHN BRIGGS

FULL STAGE LIGHTING PLOT

SCALE 1/2" = 1'0" | REVISION 1 | PLATE 1/2