

Key to Instrumentation

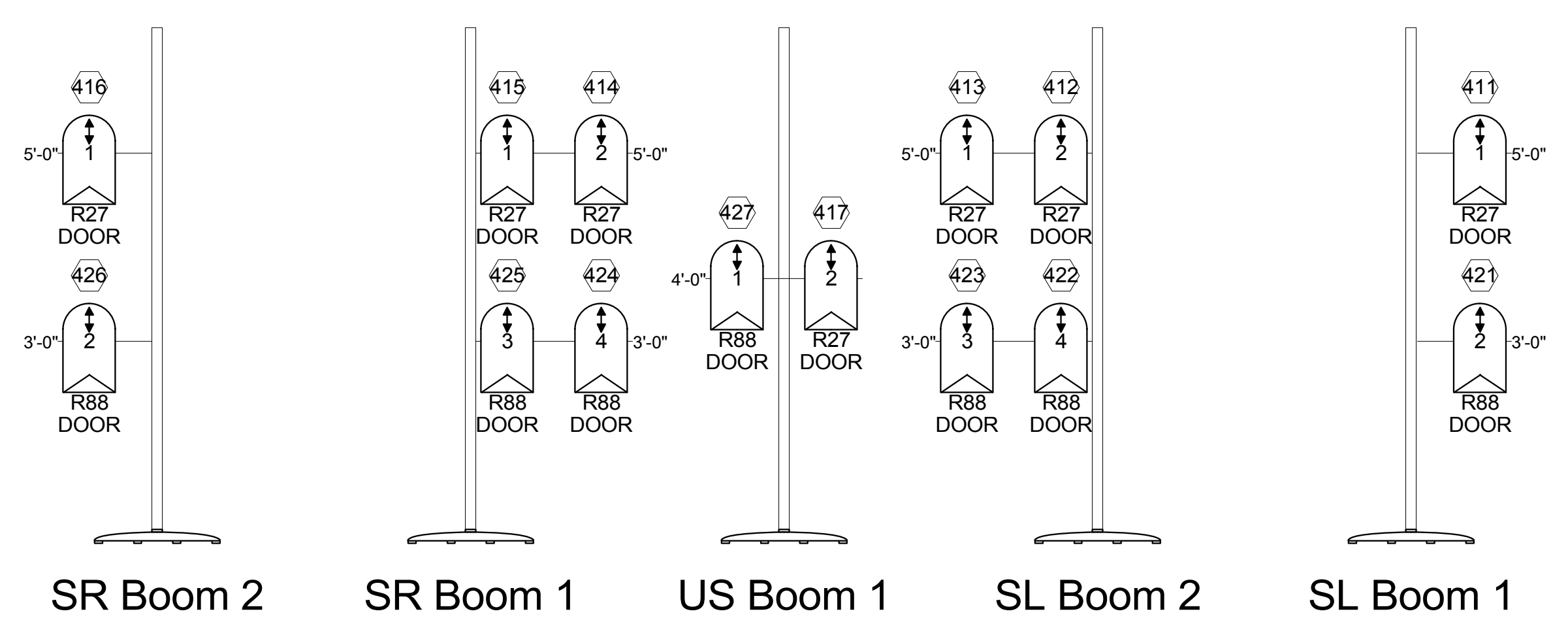
- Source Four 19' 575w
- Source Four 26' 575w
- Source Four 36' 575w
- Source Four 50' 575w
- Colortran 25'-50' Zoom 1kw
- Altman 6" Fresnel 1kw
- Altman 8" Fresnel 2kw
- COLORado 2 Zoom Tour 183w
- PAR 64 WFL 1kw
- R40 Striplight 300w / Circuit

Accessories

- Drop-In Iris
- Barndoor
- 6.25" Tophat

Legend

- Purpose
- Color
- Beam Designation
- Template
- Unit Number
- Lamp Axis Rotation
- Channel



NOTES

PLEASE HAVE R 132 ON HAND AT FOCUS.

FINAL BOOM & FLOOR MOUNT PLACEMENT ON SITE BY DESIGNER.

PLEASE HAVE BARNDOORS ON HAND AT FOCUS.

CONTACT DESIGNER WITH ANY QUESTIONS. 615.491.1007 (C)

DR. JEKYLL & MR. HYDE
Tennessee Repertory Theatre

TENNESSEE REPERTORY THEATRE

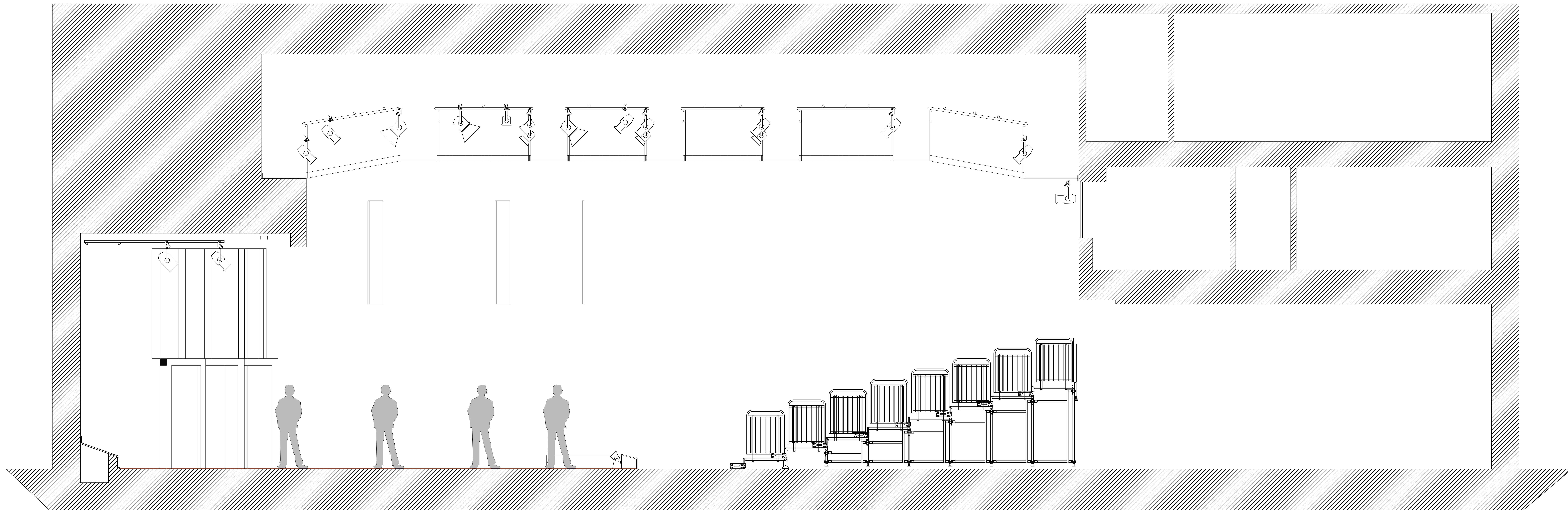
TENNESSEE PERFORMING ARTS CENTER

DESIGN: MICHAEL BARNETT

SCENIC DESIGN: GARY HOFF TECHNICAL DIRECTOR: TYLER AXT

FULL STAGE LIGHTING PLOT

SCALE 1/2" = 1'0" PLATE 1/2 SEPTEMBER 21, 2012



NOTES

PLEASE HAVE R 132 ON HAND AT FOCUS.
 FINAL BOOM & FLOOR MOUNT PLACEMENT
 ON SITE BY DESIGNER.
 PLEASE HAVE BARNDOORS ON HAND AT
 FOCUS.
 CONTACT DESIGNER WITH ANY QUESTIONS.
 615.491.1007 (C)

| | |
|--|-------------------------------|
|  DR. JEKYLL & MR. HYDE  | |
| TENNESSEE REPERTORY THEATRE | |
| TENNESSEE PERFORMING ARTS CENTER | |
| DESIGN: MICHAEL BARNETT | |
| SCENIC DESIGN: GARY HOFF | TECHNICAL DIRECTOR: TYLER AXT |
|  LIGHTING SECTION | |
| SCALE 1/2" = 1'0" | PLATE 2/2 |
| SEPTEMBER 21, 2012 | |