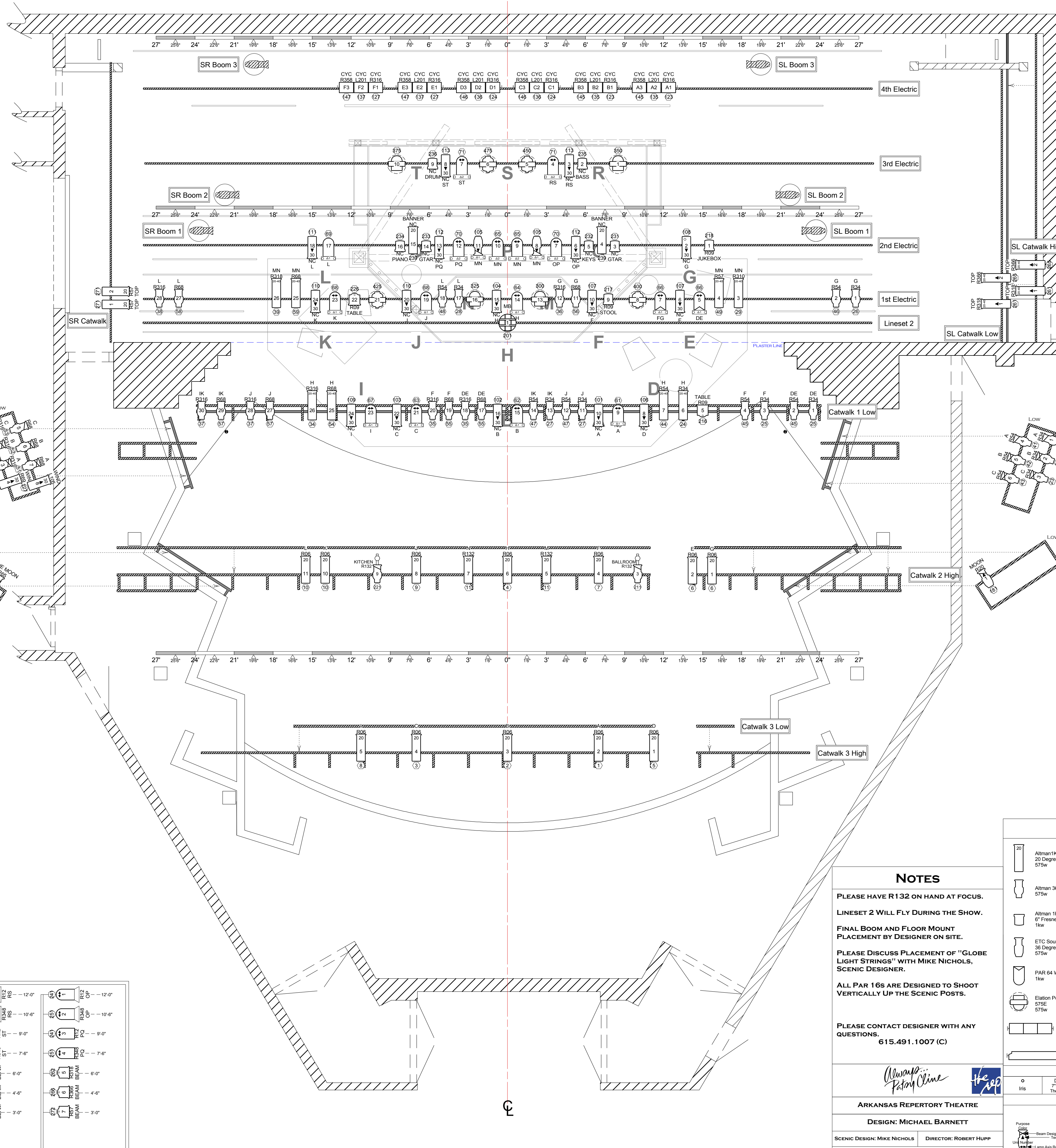


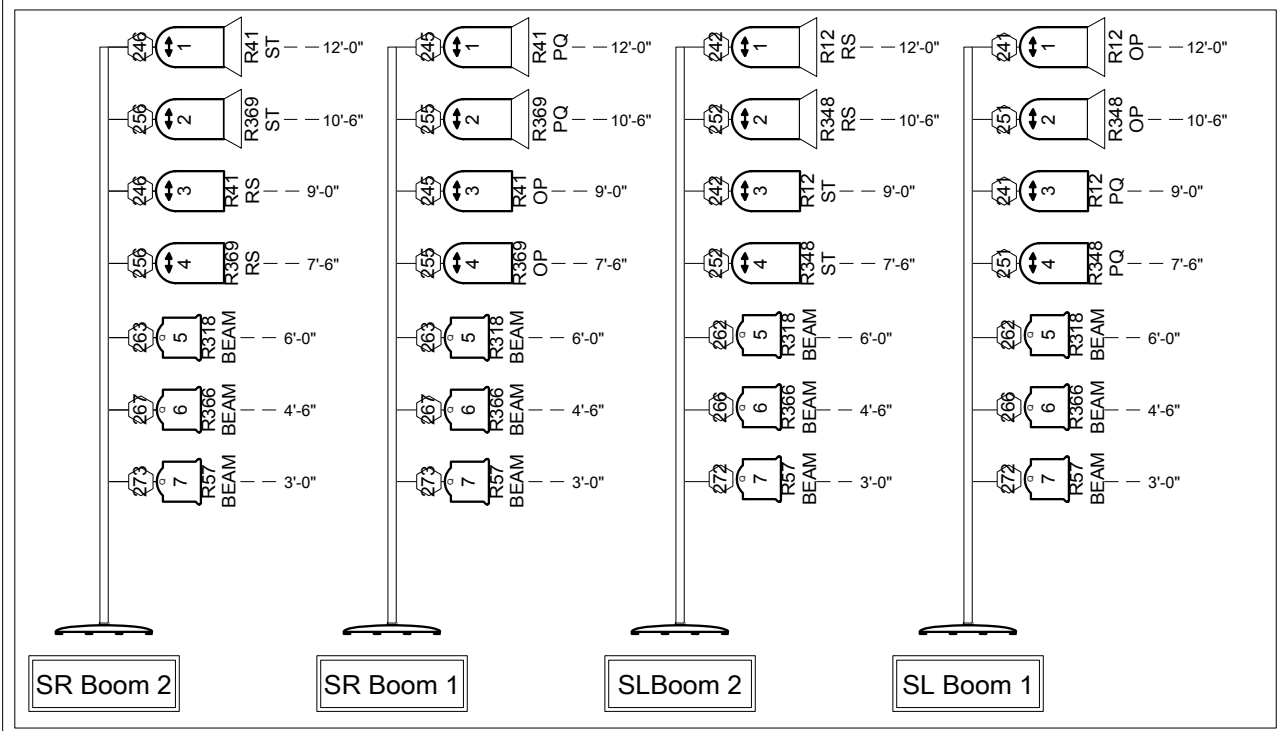
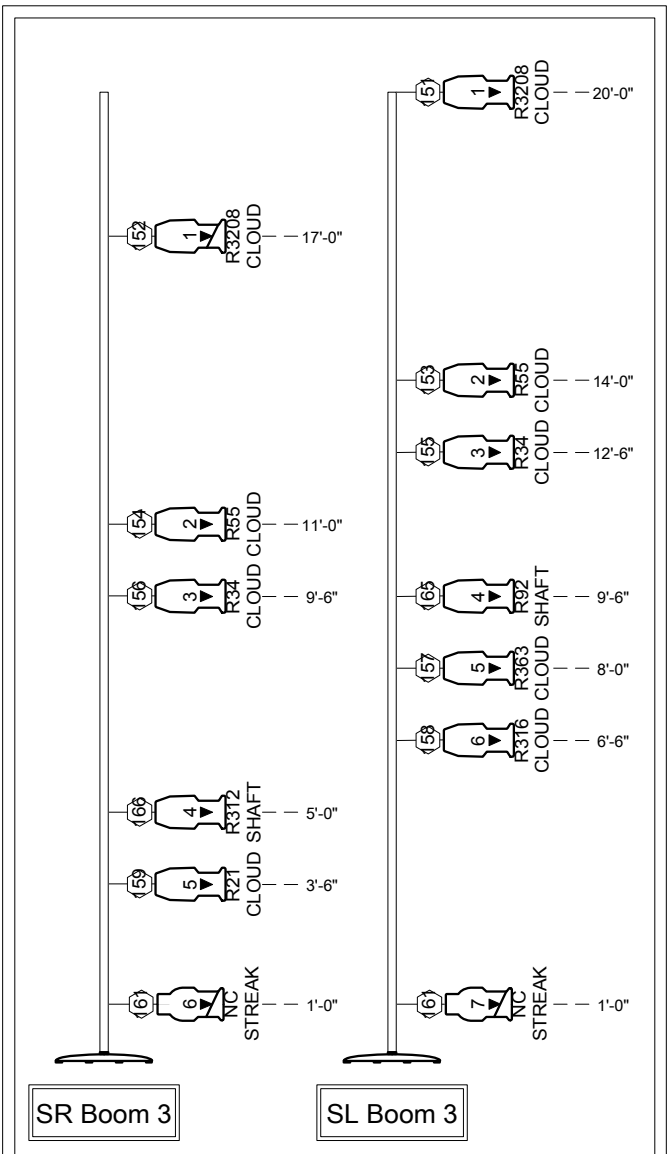
℄

TRIM	GOODS	DIST	#
27'-3"	Cyclorama	22'-5"	14
27'-0"	4th Electric	19'-6"	13
27'-3"	Portal	18'-2"	12
0'-0"	Open	17'-3"	11A
27'-3"	Legs/Beam	15'-3"	11
24'-0"	3rd Electric	13'-9"	10
0'-0"	Open	12'-3"	9A
27'-3"	Legs	10'-5"	9
27'-3"	Border	9'-8"	8
23'-6"	2nd Electric	7'-6"	7
27'-3"	Legs/Beam	6'-4"	6
27'-3"	Border	5'-2"	5
23'-0"	1st Electric	3'-4"	4
27'-3"	Legs	2'-4"	3
30'-0"	Mirror Ball	1'-6"	2
27'-3"	Border	0'-9 1/2"	1



NOTE: BOX BOOMS NOT DRAWN IN POSITION

NOTE: BOX BOOMS NOT DRAWN IN POSITION



**NOTES**

PLEASE HAVE R132 ON HAND AT FOCUS.

LINESET 2 WILL FLY DURING THE SHOW.

FINAL BOOM AND FLOOR MOUNT PLACEMENT BY DESIGNER ON SITE.

PLEASE DISCUSS PLACEMENT OF "GLOBE LIGHT STRINGS" WITH MIKE NICHOLS, SCENIC DESIGNER.

ALL PAR 16s ARE DESIGNED TO SHOOT VERTICALLY UP THE SCENIC POSTS.

PLEASE CONTACT DESIGNER WITH ANY QUESTIONS.  
615.491.1007 (C)

*Arkansas Repertory Theatre*

ARKANSAS REPERTORY THEATRE

DESIGN: MICHAEL BARNETT

SCENIC DESIGN: MIKE NICHOLS DIRECTOR: ROBERT HUPP

FULL STAGE LIGHTING PLOT

SCALE 1/4" = 10" REVISION 2 PLATE 1/3

**Key to Instrumentation**

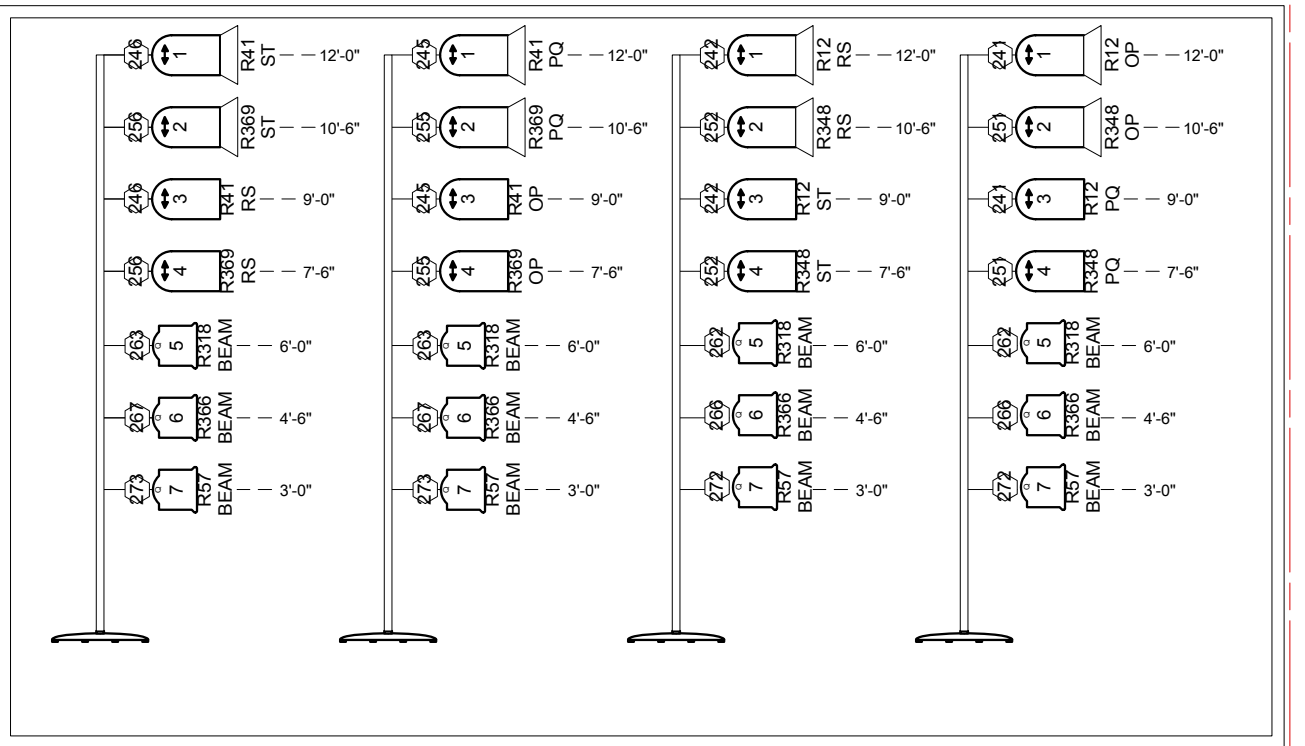
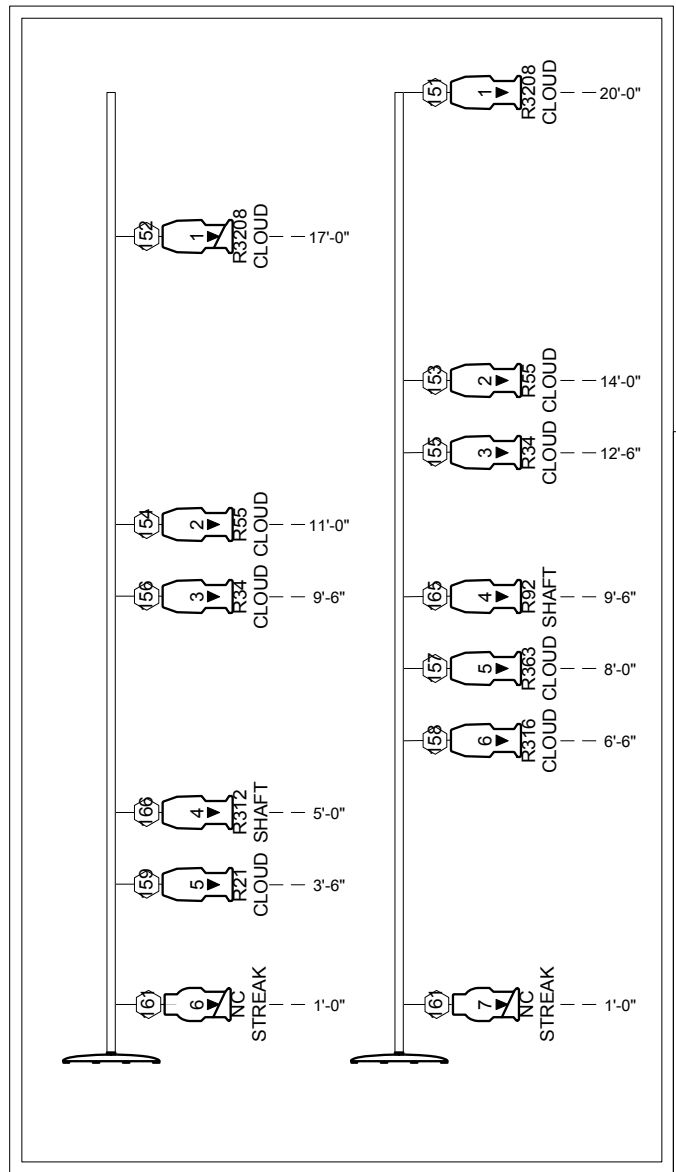
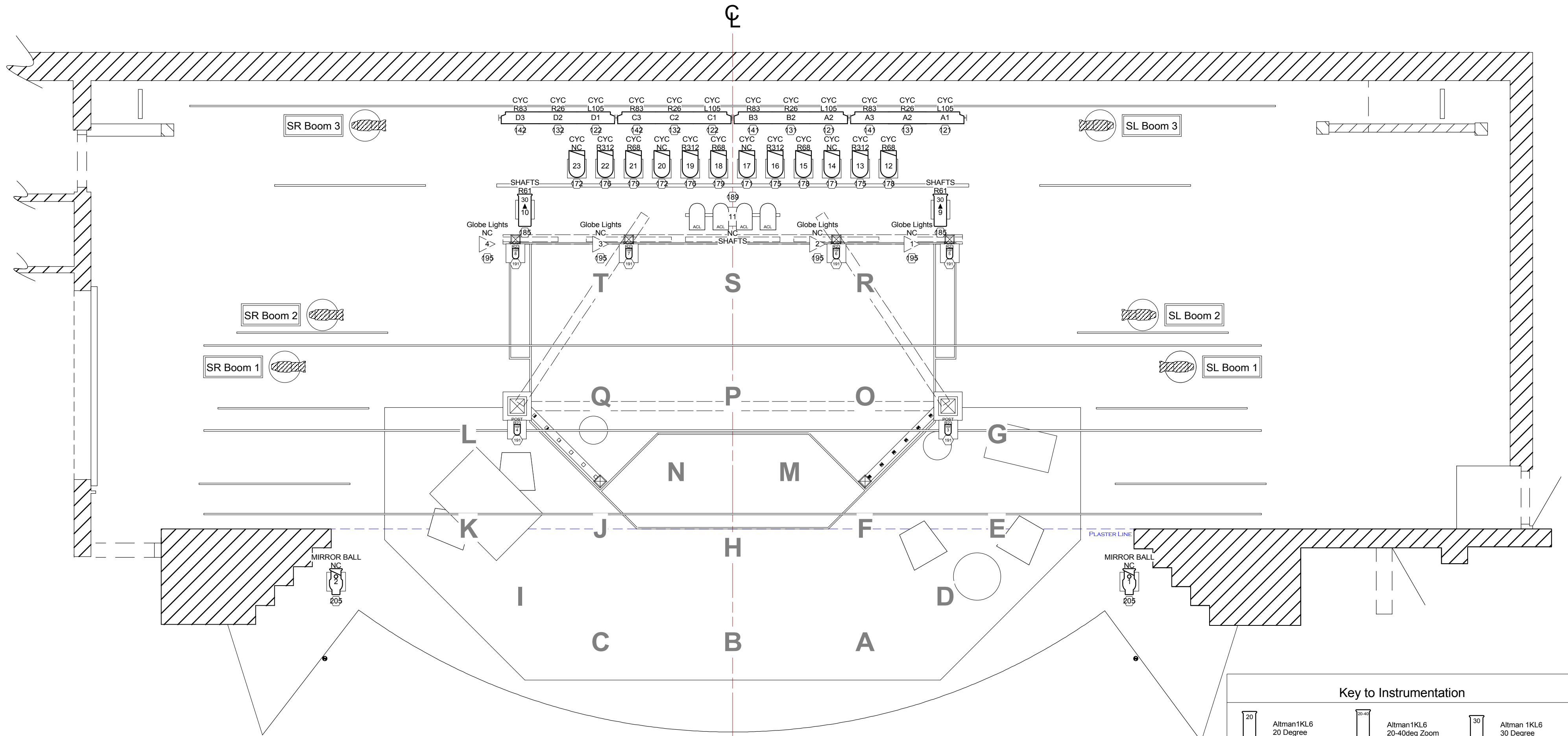

**Accessories**

--	--	--	--	--

**Legend**

Purpose: Beam Designation, Tempo, Lamp Axis Rotation

Replacement Codes: Elation Design Spot, Whel 1, Whel 2, Whel 3, Whel 4, Whel 5, Whel 6, Whel 7, Whel 8, Whel 9, Whel 10, Whel 11, Whel 12, Whel 13, Whel 14, Whel 15, Whel 16, Whel 17, Whel 18, Whel 19, Whel 20, Whel 21, Whel 22, Whel 23, Whel 24, Whel 25, Whel 26, Whel 27, Whel 28, Whel 29, Whel 30, Whel 31, Whel 32, Whel 33, Whel 34, Whel 35, Whel 36, Whel 37, Whel 38, Whel 39, Whel 40, Whel 41, Whel 42, Whel 43, Whel 44, Whel 45, Whel 46, Whel 47, Whel 48, Whel 49, Whel 50, Whel 51, Whel 52, Whel 53, Whel 54, Whel 55, Whel 56, Whel 57, Whel 58, Whel 59, Whel 60, Whel 61, Whel 62, Whel 63, Whel 64, Whel 65, Whel 66, Whel 67, Whel 68, Whel 69, Whel 70, Whel 71, Whel 72, Whel 73, Whel 74, Whel 75, Whel 76, Whel 77, Whel 78, Whel 79, Whel 80, Whel 81, Whel 82, Whel 83, Whel 84, Whel 85, Whel 86, Whel 87, Whel 88, Whel 89, Whel 90, Whel 91, Whel 92, Whel 93, Whel 94, Whel 95, Whel 96, Whel 97, Whel 98, Whel 99, Whel 100



**NOTES**

PLEASE HAVE R 132 ON HAND AT FOCUS.

LINESSET 2 WILL FLY DURING THE SHOW.

FINAL BOOM AND FLOOR MOUNT PLACEMENT BY DESIGNER ON SITE.

PLEASE DISCUSS PLACEMENT OF "GLOBE LIGHT STRINGS" WITH MIKE NICHOLS, SCENIC DESIGNER.

ALL PAR 16S ARE DESIGNED TO SHOOT VERTICALLY UP THE SCENIC POSTS.

PLEASE CONTACT DESIGNER WITH ANY QUESTIONS.  
615.491.1007 (C)

*Always... Patry Cline*

**ARKANSAS REPERTORY THEATRE**

**DESIGN: MICHAEL BARNETT**

SCENIC DESIGN: MIKE NICHOLS      DIRECTOR: ROBERT HUPP

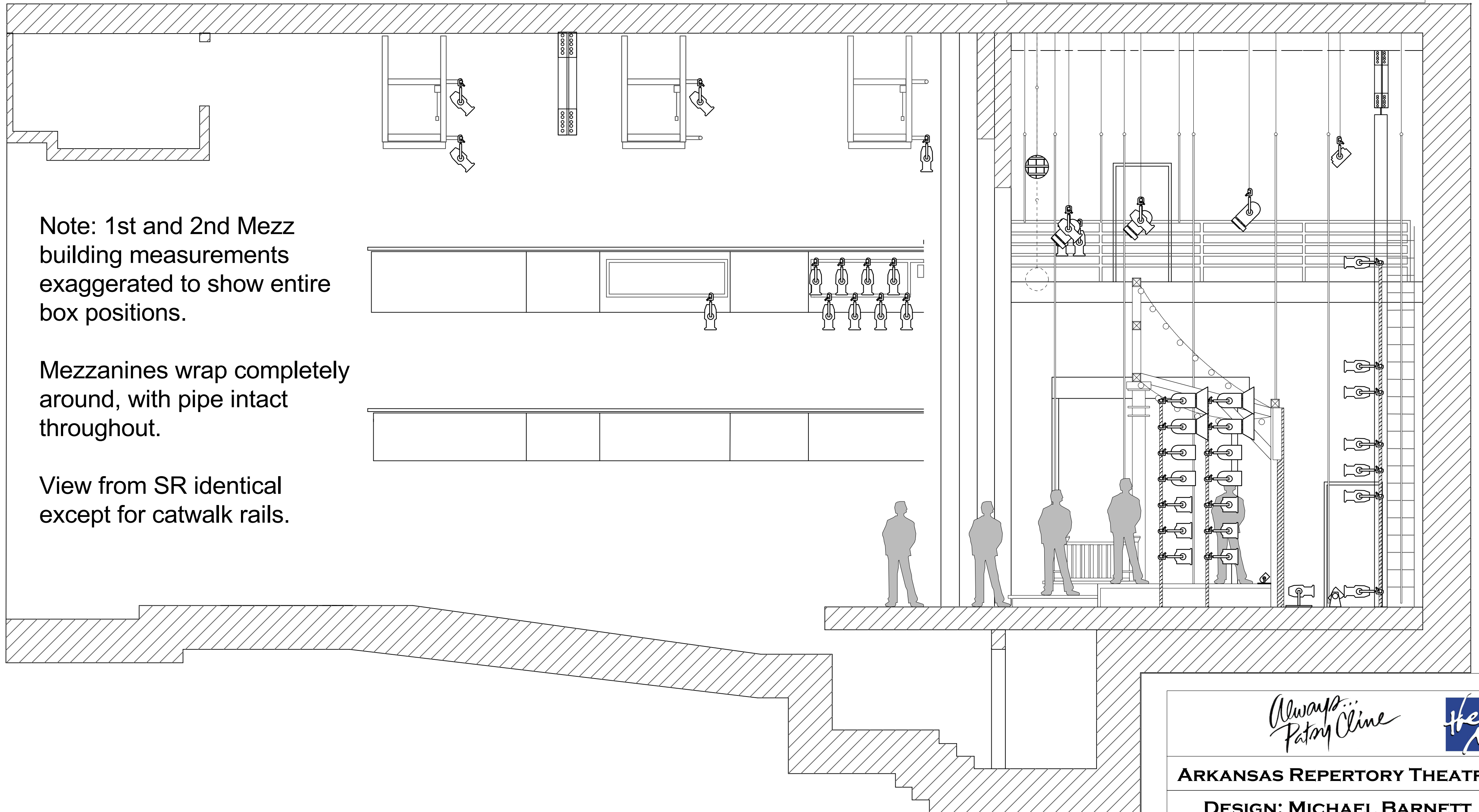
**FLOOR AND SET MOUNT PLOT**

SCALE 1/4" = 1'0"      REVISION 2      PLATE 2/3

**Key to Instrumentation**

<b>Accessories</b>		
<b>Legend</b>		


1	10'-9 1/2"	Border	27'-3"
2	1'-6"	Mirror Ball	30'-0"
3	2'-4"	Legs	27'-3"
4	3'-4"	1st Electric	23'-0"
5	5'-2"	Border	27'-3"
6	6'-4"	Legs/Beam	27'-3"
7	7'-6"	2nd Electric	23'-6"
8	9'-8"	Border	27'-3"
9	10'-5"	Legs	27'-3"
9A	12'-3"	Open	0'-0"
10	13'-9"	3rd Electric	24'-0"
11	15'-3"	Legs/Beam	27'-3"
11A	17'-3"	Open	0'-0"
12	18'-2"	Portal	27'-3"
13	19'-6"	4th Electric	27'-0"
14	22'-5"	Cyclorama	27'-3"
#	DIST	GOODS	TRIM



Note: 1st and 2nd Mezz building measurements exaggerated to show entire box positions.

Mezzanines wrap completely around, with pipe intact throughout.

View from SR identical except for catwalk rails.

*Always... Patry Cline* 

**ARKANSAS REPERTORY THEATRE**

**DESIGN: MICHAEL BARNETT**

SCENIC DESIGN: MIKE NICHOLS      DIRECTOR: ROBERT HUPP

**SECTION PLOT**

SCALE 1/4" = 1'0"      REVISION 3      PLATE 3/3